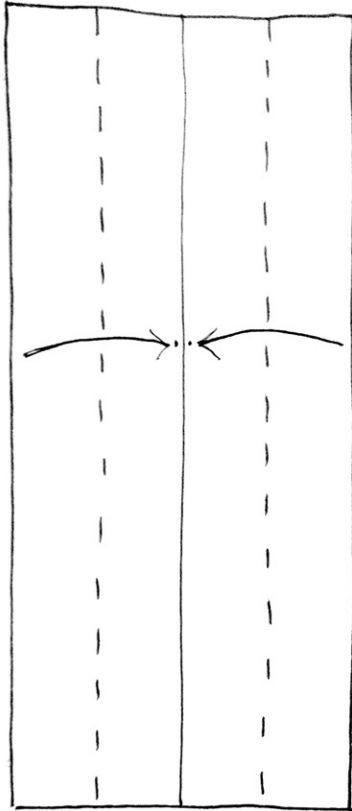
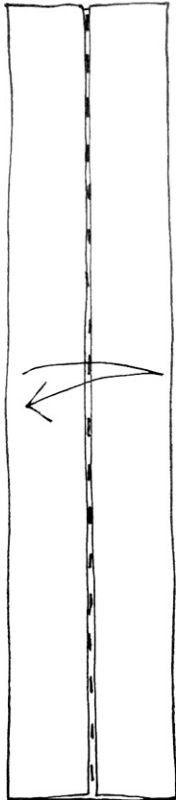


\$ One-Arm Saguaro Cactus By Mary Ellen Palmeri

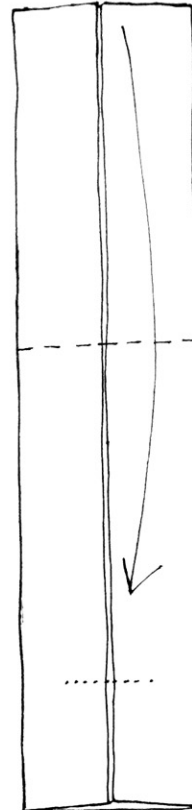
Use any denomination bill - or cut a paper rectangle into a dollar proportion.
 US dollar bill dimension is 6.14 " x 2.61" and its ratio of length:width is approximately 7:3
 For a taller model cut a longer rectangle; try a 6:1 proportion (8.5" x 1 5/8", or 11" x 1 7/8")



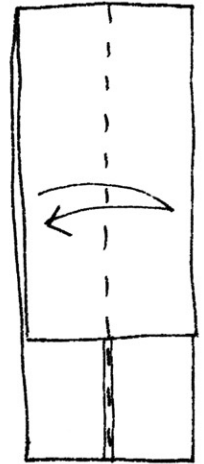
1. Pre-crease in half to find center. Fold sides in almost to the center (to the dots)



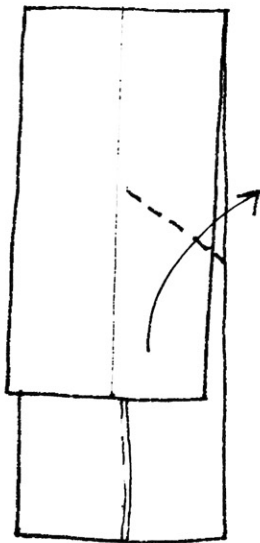
2. Re-fold center crease, then unfold it again



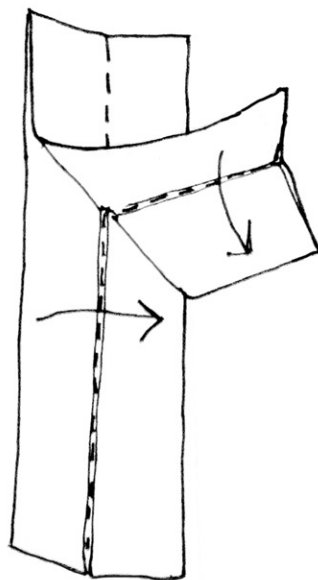
3. Fold top edge down to lower dotted line; this fold can vary a little.



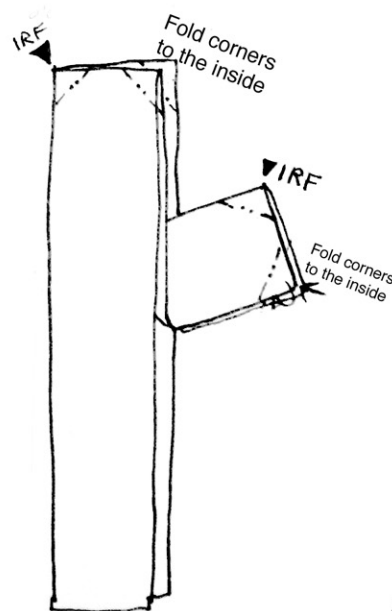
4. Re-fold center again, crease well then unfold once more



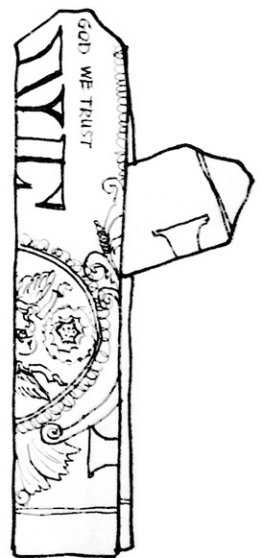
5. Lift up loose flap & crease the right half at the angle shown; this fold is only on the right side of the flap



6. Close model along center while also folding down top section of the flap to enclose 'arm' inside. Flatten entire model.



7. Shape with small folds at corners; inside reverse fold [IRF] where possible & fold remaining corners *to the inside*



8. Model completed