

Baby Onesie

By Mary Ellen Palmeri



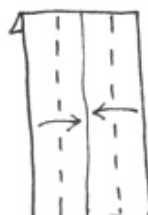
This model needs a 1:2 rectangle. If you cut a square of origami paper in half you can make two models. The white side of the paper will show as the collar when you begin with the white side up in step 1.



1. Lightly crease to find the center; fold & unfold



2. Mountain fold collar behind (about 1/4" on 6" paper)

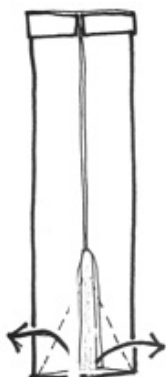


3. 'Cupboard-fold' - sides meet at center

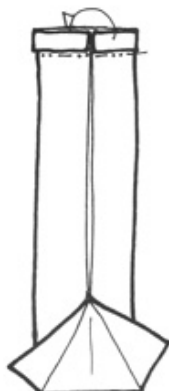
[This arrow means next drawings are in a larger proportion.]



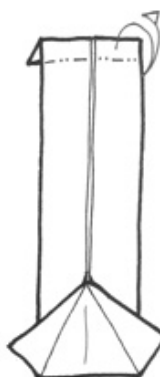
4. OPTIONAL STEP: To have trim show on sleeves, fold narrow strips along edges as seen above; for solid color sleeves, skip this step.



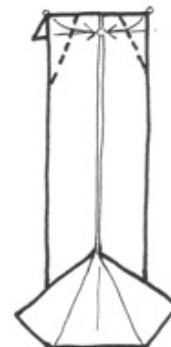
5. Fold corners out to form sleeves (start about 1.25" above lower edge & fold out to the lower corners)



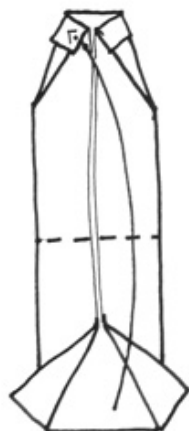
6. Mountain fold top collar section behind



7. Mountain fold collar once more, crease, then un-fold once



8. Fold top corners in at sharp angles - the points meet at center of crease made in last step. (See next step for correct placement.)



9. Bring sleeve section up and slide edge under flaps of collar. Crease well.



10. Inside Reverse-fold bottom corners: 1st: Crease sharply & unfold. 2nd: Separate layers enough to push folds to the inside on same creases; flatten.



11a. Completed plain version of Onesie



11b. Completed Onesie with sleeve trim using Optional Step 4.

